



Proposal to Split NATA District Four



Craig Voll, PhD, ATC
NATA District Four Director

Ryan Wilkinson, EdD, ATC, CSCS
GLATA President

EXECUTIVE SUMMARY

- District Governance and Representation
- Split NATA District Four into two Districts:
 - District Four (Indiana, Michigan, Ohio)
 - District Eleven (Illinois, Minnesota, Wisconsin)
- Outcomes:
 - Equitable Leadership Opportunities
 - Equitable Representation/Voice

NATA BYLAWS (ARTICLE 5.2)

“If (for at least twelve (12) consecutive months) the voting Members of a District constitute twenty percent (20%) or more of the total voting Members of NATA, that District may, by majority vote at a District meeting, call for a ballot of its voting Members on the question of whether to split itself into two (2) Districts.

The ballot shall specify the geographic boundaries that each of the two new Districts would have. If two-thirds (2/3) of the votes cast are in favor of subdividing the District, that District may submit a request to subdivide into two (2) Districts to the NATA Board of Directors.

Explanation of New Bylaws

While it's difficult to mandate communication, procedures suggested in these Bylaws call for two-way communication in various areas to keep the membership apprised of matters affecting them and allowing opportunity for input from the members to the district directors.

We have attempted to make NATA an even more democratic organization, not a less democratic one, by giving all key business decisions to the districts, where genuine discussions can occur. The Bylaws promote continued contact at the grassroots level - the districts - so that the members can comment at a point where their voices are heard and counted.

Article I: Offices and Agent

NATA national office is now located in Texas.

Article II: Purposes

Purposes of the organization are updated to include the physically active target population, encompass current activities and allow a general enough orientation so that any future activities of NATA would also be included.

Article III: Membership

3.1 Classes of Members

Current membership classes are enumerated.

3.2 Membership Qualifications

Since membership qualifications may change, it is proposed that they would be specified in the *NATA Policies and Procedures Manual*. This document typically would include more specific procedures, while the overall governing document, the Bylaws, should be more general, since it is more difficult to change.

3.5 Membership Rights and Privileges

Membership rights and privileges are spelled out in this section. Only certified and retired certified members have the right to vote. No change is proposed in this area.

3.6 Membership Dues

- For the new Bylaws it is suggested that the annual dues be set by the Board of Directors only after consultation with the membership. The current Constitution does not specify how dues (increases) would be handled, but the Bylaws set forth a procedure to follow.

- Payment and arrears are stated the way they are handled in the national office now.

Article IV: Annual Members' Meeting

This section has been rewritten to reflect current practice. Because of the increasing size of our business meeting and the fact that we're unable to get enough people for a quorum as specified in the current Constitution, for some years now we have not conducted business at this meeting. It's felt that business can be conducted much more manageably and effectively at the district level.

Article V: Districts

5.1 Number and Geographic Boundaries

District make-up is specified as it is currently. At its December 1993 meeting, the board of directors voted to include Guam in District 8 and Puerto Rico and the U.S. Virgin Islands in District 9, unless the members in these U.S. territories

5.2 Division of a District into Two Districts

This section addresses the mechanics of redistricting. Any district that has 20% or more of the total voting members of NATA for 12 consecutive months can split into two districts if its membership wishes to. The district must poll its members to make sure it wishes to divide, and the NATA Board will vote to approve the request.

Article VI: Board of Directors

These sections generally spell out what is current practice.

6.6 Removal & 6.8 Vacancies

These sections improve handling of removal/replacement of directors, which is not clear now. They allow for the districts to remove a director from office according to their own charters and bylaws. They also allow the districts to fill a vacancy according to their governance documents until a new director is elected.

6.9 Meetings through 6.11 Notice of Meeting

Currently, the Board of Directors meets three times a year with the possibility of a fourth meeting. One of these occasions is in connection with our clinical symposium in June. On the months when the Board does not convene in person, we have

NATA NEWS FEBRUARY 1994

1994:

- APPROVED BY 2/3 OF DISTRICTS (10 – 0)
- APPROVED BY 10-0 VOTE AT DECEMBER BOD MEETING

CURRENT STRUCTURE



CURRENT REPRESENTATION

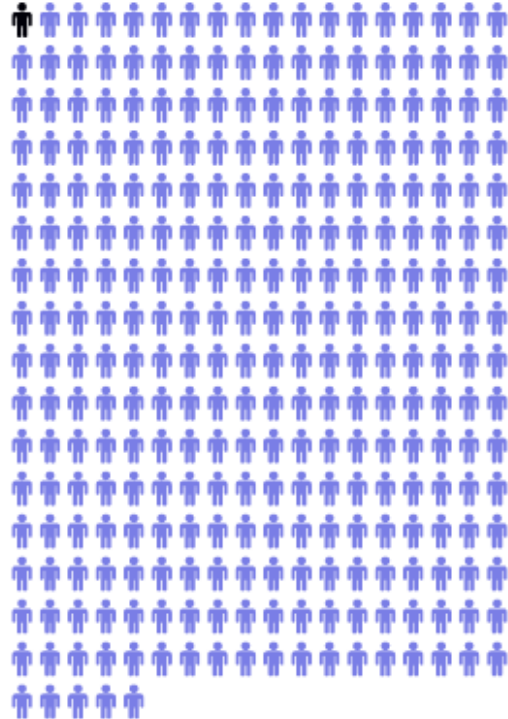
- District Four
 - 1 Leader/Reps : **7,539** members
- Other Districts (Avg)
 - 1 Leader/Reps : **3,286** members



December 2017 Data

District	Voting Membership	% NATA
1	2,377	6.32%
2	5,229	13.89%
3	4,224	11.22%
4	7,539	20.03%
5	3,293	8.75%
6	2,523	6.70%
7	2,068	5.50%
8	2,973	7.90%
9	5,316	14.13%
10	1,568	4.17%
APO/FPO	30	0.08%
INT	494	1.31%
Total	37,634	100%

District Four (7,539)



● Leader ● Members

Others (3,286)



● Leader ● Members

DISTRICT FOUR

DISTRICT FOUR MEMBERSHIP VOTES

- **District Four Business Meeting (June 27, 2018)**
 - Motion Approved: 182 in favor, 11 opposed
- **Full Membership Electronic Ballot (Nov. 2018)**
 - 1,590 Votes (21.82%)
 - YES: 1,215 votes (76.42%)
 - NO: 375 votes (23.58%)

PROPOSED STRUCTURE



	Voting Membership
D4 (IN, MI, OH)	4,100 (10.89% - 4 th largest district)
D11 (IL, MN, WI)	3,338 (9.14% - 5 th largest district)

PROPOSED REPRESENTATION

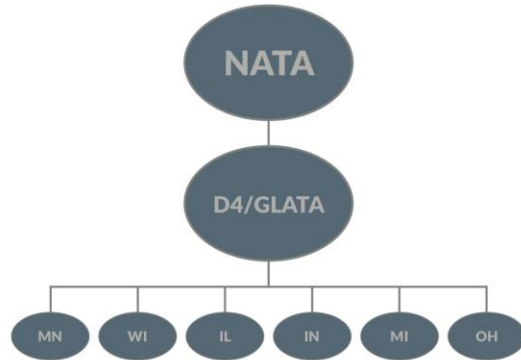
- District Four
 - 1 Leader/Reps : **4,100** members
- District Eleven
 - 1 Leader/Reps : **3,439** members
- Other Districts (Avg)
 - 1 Leader/Reps : **3,286** members

District	Voting Membership	% NATA
1	2,377	6.32%
2	5,229	13.89%
3	4,224	11.22%
4	4,100	10.89%
5	3,293	8.75%
6	2,523	6.70%
7	2,068	5.50%
8	2,973	7.90%
9	5,316	14.13%
10	1,568	4.17%
11	3,439	9.14%
APO/FPO	30	0.08%
INT	494	1.31%
Total	37,634	100%

ORGANIZATIONAL STRUCTURE - CURRENT

GLATA Functions

- Annual Meeting/Continuing Education
- Awards and Scholarships
- Grants
 - Research, Legislative, Professional Advancement, Safe Sports School, Leadership Academy
- Investment Management & Disbursement
- Inter-State Collaboration
- Strategic Planning

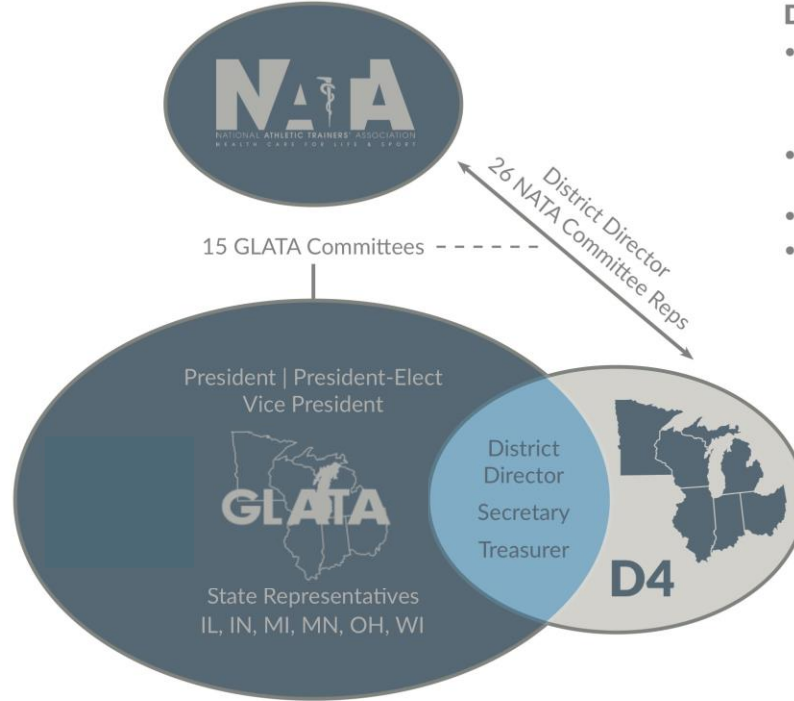


CURRENT FINANCIAL STRUCTURE

KEY

Direct Reporting —————

Indirect Reporting - - - - -



District Functions

- National Voice & Representation
 - NATA Board of Directors
 - 26 NATA Committees
- Membership Recruitment & Retention
- Dues Disbursement
- NATA District-Based Resources

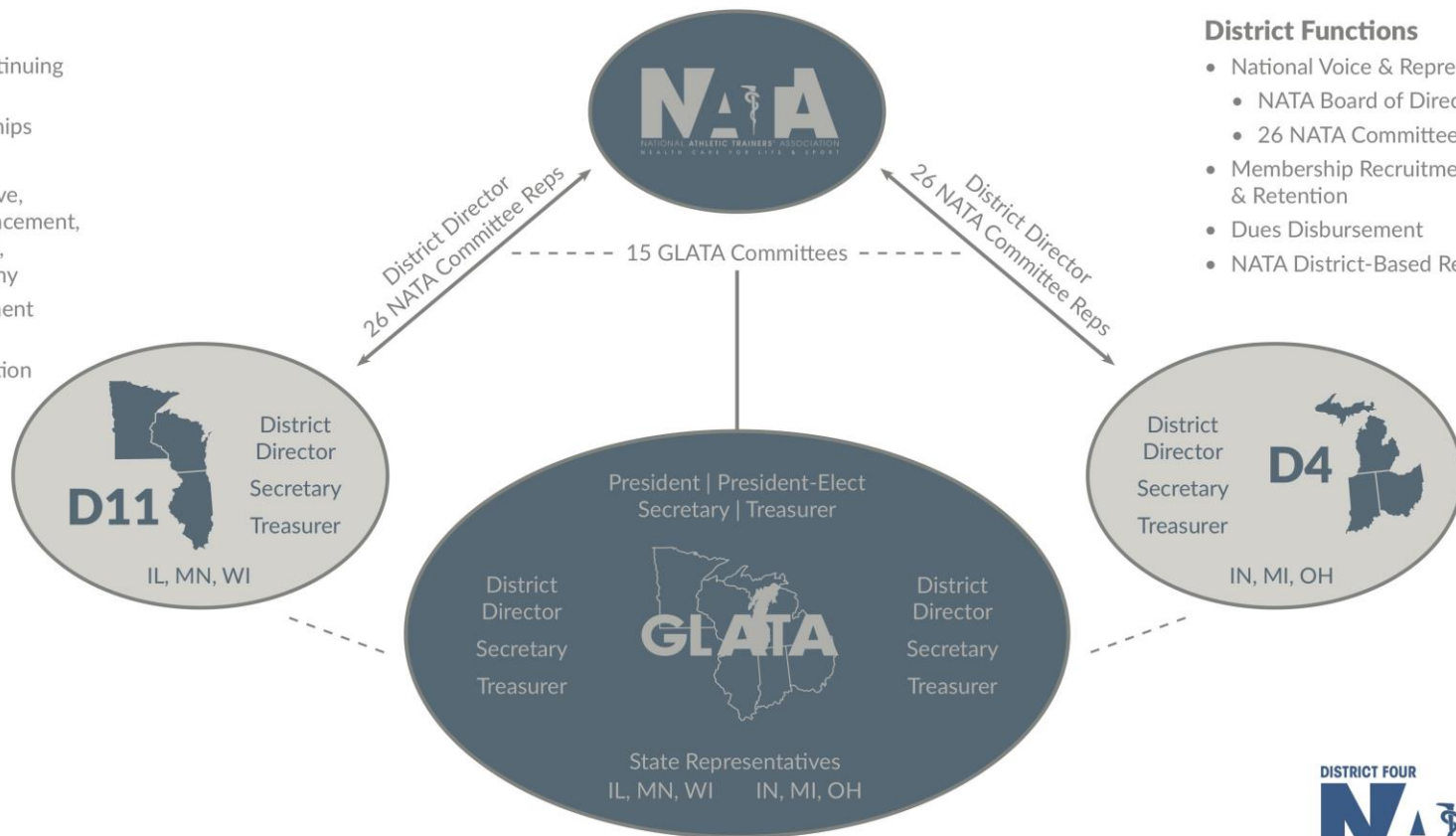
ORGANIZATIONAL STRUCTURE - PROPOSED

GLATA Functions

- Annual Meeting/Continuing Education
- Awards and Scholarships
- Grants
 - Research, Legislative, Professional Advancement, Safe Sports School, Leadership Academy
- Investment Management & Disbursement
- Inter-State Collaboration
- Strategic Planning

District Functions

- National Voice & Representation
 - NATA Board of Directors
 - 26 NATA Committees
- Membership Recruitment & Retention
- Dues Disbursement
- NATA District-Based Resources

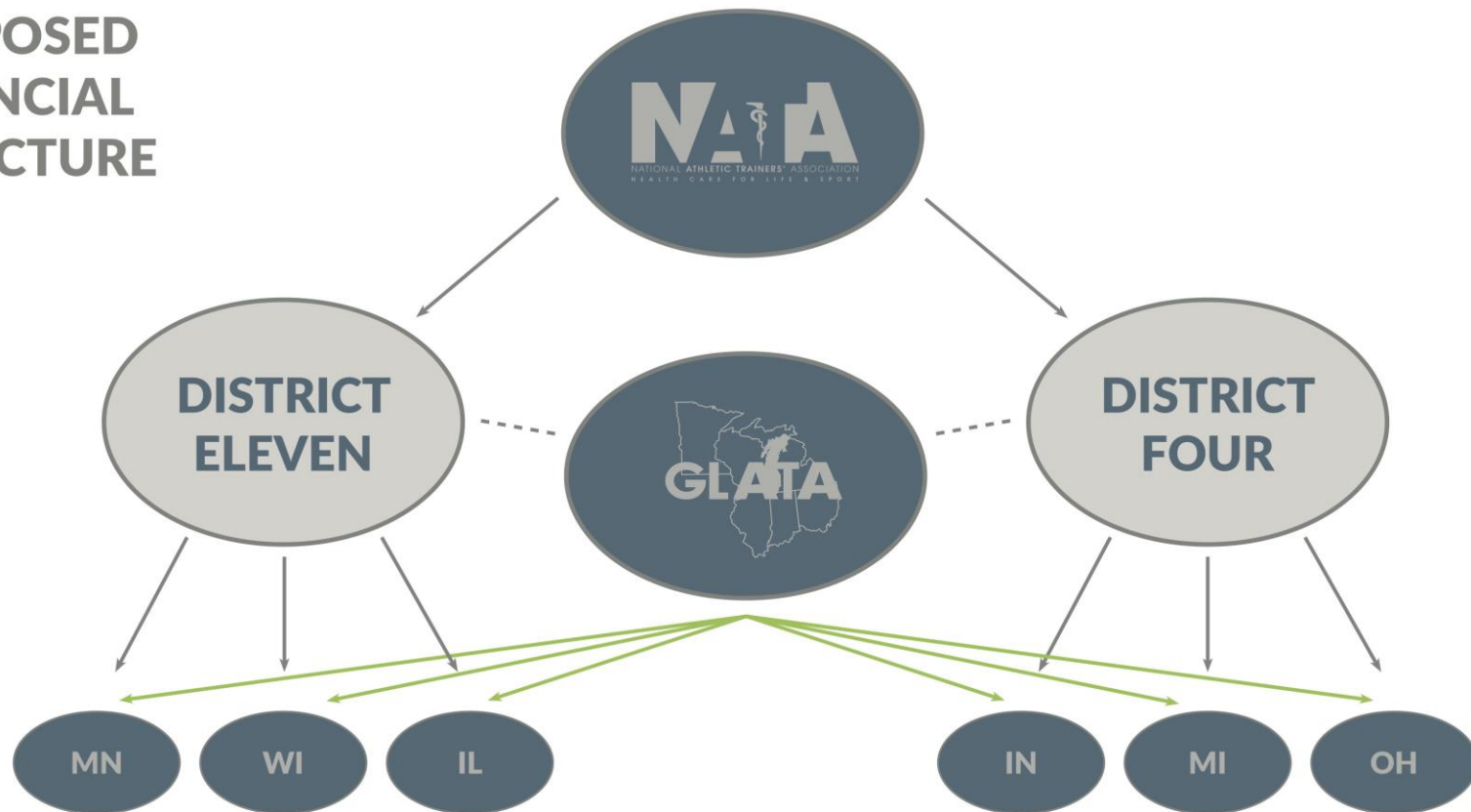


KEY

Direct Reporting —————

Indirect Reporting - - - - -

PROPOSED FINANCIAL STRUCTURE



KEY

Member Dues



GLATA Grants/Funds



GLATA FINANCIAL IMPACT

- It is expected to cost approximately **\$15,000-\$20,000** of additional expenses to operate an additional District within the GLATA annual budget.
- Over the past three fiscal years, GLATA has ended the fiscal year with an **average budget surplus** of approximately **\$110,000**.
- Per policy, surplus funds are currently re-invested into GLATA investment accounts. Spillover mechanisms are used to fund the following GLATA investment accounts:
 - Capital Reserve
 - Strategic Initiative
 - Special Projects
 - Endowment

GLATA FINANCIAL IMPACT

- GLATA continues to prioritize funding to support our **state associations**
- State Disbursements from GLATA managed investment accounts
 - 2018 - **\$15,000** per state (\$90,000 total disbursement)
 - 2017 - **\$20,000** per state (\$120,000 total disbursement)
- State Grants
 - **\$11,000** annually per state (\$66,000)
- Special Projects Fund
 - **\$50,000** per year

NATA FINANCIAL IMPACT

- NATA Director of Finance Kathy Crelly estimates that creating District Eleven will cost the NATA approximately **\$36,000** per year.
- This represents the cost of District Eleven representatives attending NATA meetings
 - Joint Committee Meeting
 - NATA Convention
 - NATA Board of Directors Meetings

MEMBER - FREQUENTLY ASKED QUESTIONS

- How much will this cost?
- What are the advantages/disadvantages?
- Impact on GLATA & the Annual Meeting?
- Impact on NATA?
- Will there be a dues increase?
- What will the Executive Boards look like?

WILL THERE BE ENOUGH VOLUNTEERS?

- Average Number of Applicants Per Position:

(2016-2019)

Number of Applicants	District Four IN, MI, OH	District Eleven IL, MN, WI
Appointed (21)	4.19 (88)	4.14 (87)
Elected (7)	1.14 (8)	1.14 (8)

THANK YOU!

HOW ELSE CAN WE HELP YOU?

- Our goal is to provide as much information as we can to allow the NATA Board of Directors to make a very well-informed decision.
- Please let us know how we can help you.

Thank You! Please feel free to contact us directly:

- craig.voll@outlook.com
- ryandwilkinson@gmail.com